


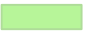

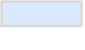


Islands in the Sky Map 4 NREPA New Wilderness

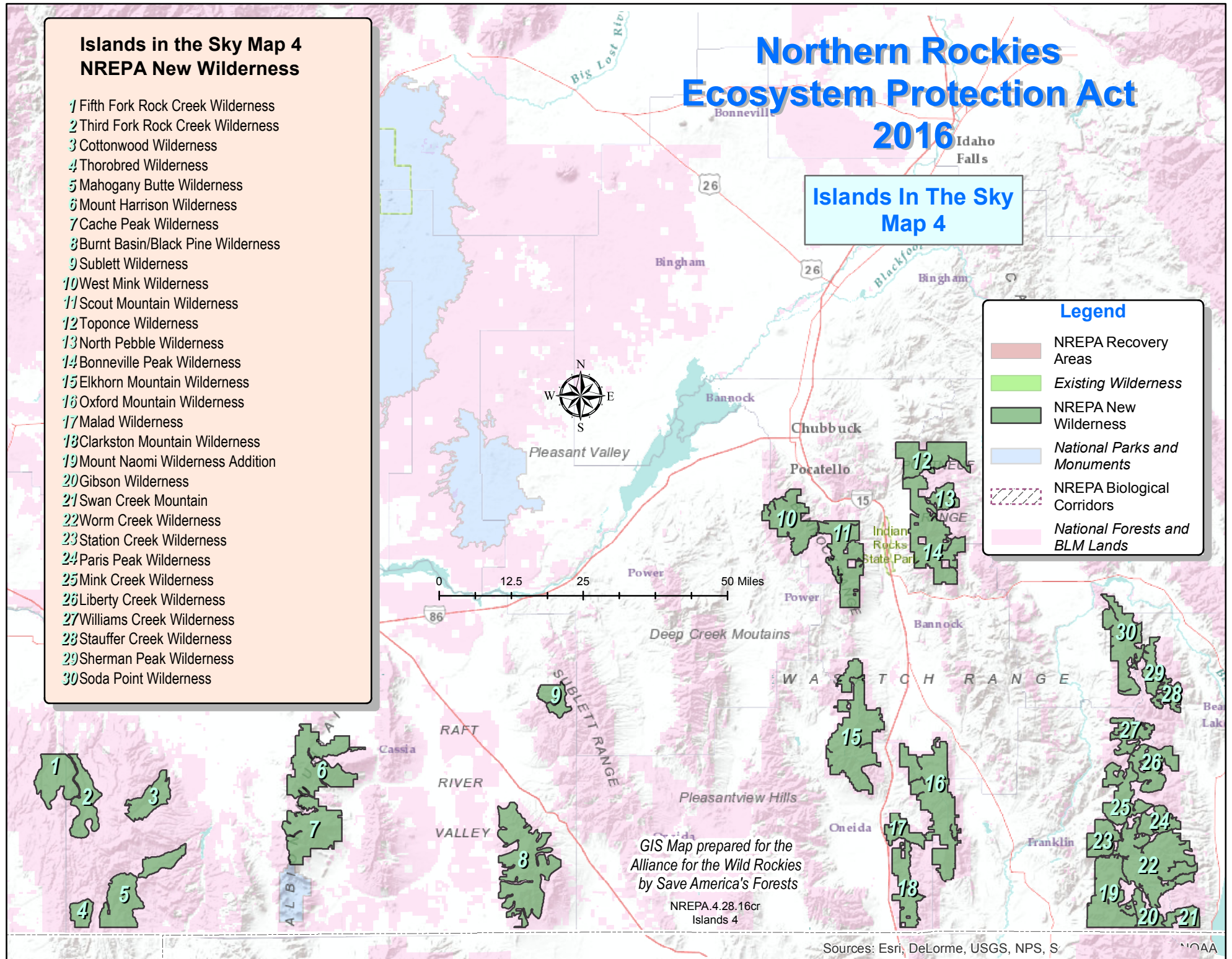
- 1 Fifth Fork Rock Creek Wilderness
- 2 Third Fork Rock Creek Wilderness
- 3 Cottonwood Wilderness
- 4 Thorobred Wilderness
- 5 Mahogany Butte Wilderness
- 6 Mount Harrison Wilderness
- 7 Cache Peak Wilderness
- 8 Burnt Basin/Black Pine Wilderness
- 9 Sublett Wilderness
- 10 West Mink Wilderness
- 11 Scout Mountain Wilderness
- 12 Toponce Wilderness
- 13 North Pebble Wilderness
- 14 Bonneville Peak Wilderness
- 15 Elkhorn Mountain Wilderness
- 16 Oxford Mountain Wilderness
- 17 Malad Wilderness
- 18 Clarkston Mountain Wilderness
- 19 Mount Naomi Wilderness Addition
- 20 Gibson Wilderness
- 21 Swan Creek Mountain
- 22 Worm Creek Wilderness
- 23 Station Creek Wilderness
- 24 Paris Peak Wilderness
- 25 Mink Creek Wilderness
- 26 Liberty Creek Wilderness
- 27 Williams Creek Wilderness
- 28 Stauffer Creek Wilderness
- 29 Sherman Peak Wilderness
- 30 Soda Point Wilderness

Northern Rockies Ecosystem Protection Act 2016

Islands In The Sky Map 4

Legend

-  NREPA Recovery Areas
-  Existing Wilderness
-  NREPA New Wilderness
-  National Parks and Monuments
-  NREPA Biological Corridors
-  National Forests and BLM Lands



GIS Map prepared for the
Alliance for the Wild Rockies
by Save America's Forests

NREPA 4.28.16cr
Islands 4